



The Activelogix PV Dashboard provides a unified view of all connected solar power generation stations across the Enterprise. Configurable as either a standalone application or integrated with the acclaimed Periscope™ Enterprise Dashboard, this system enables an economical, subscription-free, standardized view of all online solar stations, regardless of manufacturer.

SOLAR POWER UNIVERSAL DASHBOARD

Unified Network Management for Solar Photovoltaic Stations

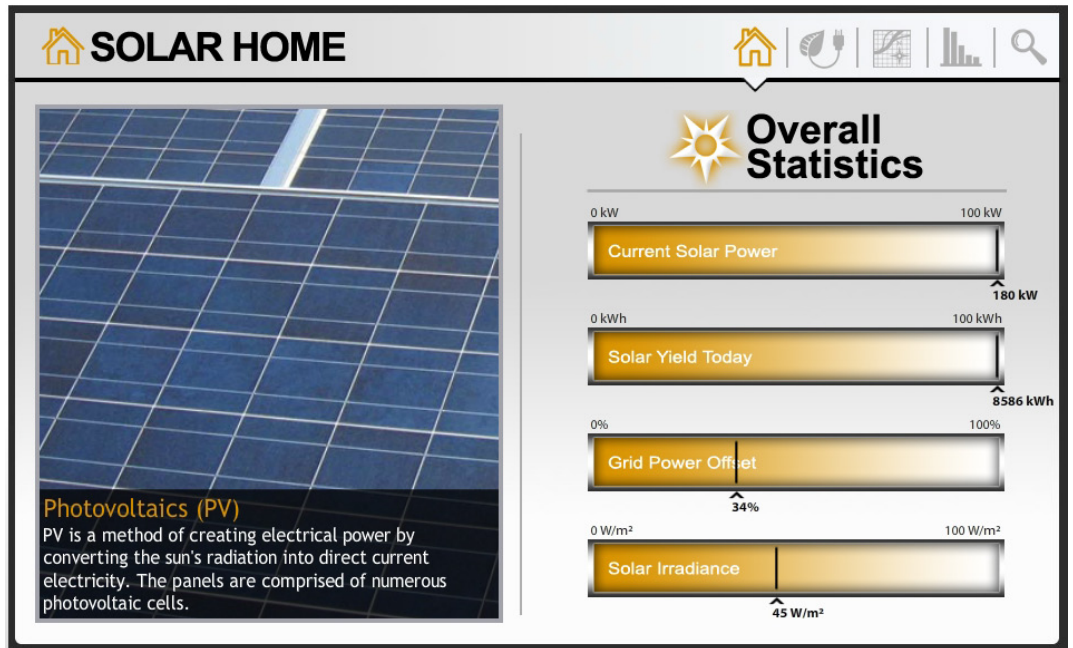
Overview

The Periscope™ Solar Power Universal Dashboard from Activelogix enables the unprecedented ability to view and manage a hybrid network of solar power stations, regardless of their manufacturer or type. Traditional approaches often require the owner to subscribe to each manufacturer's "in-house" cloud network, which can be expensive and duplicative for a diverse network of systems acquired over time. With the Periscope PV Universal Dashboard, all station data streams are presented equally, allowing for clear, intuitive analysis and management. PV information includes total network performance, a map-based visualization of individual station status, as well as detailed metrics showing station usage, output and other critical parameters.

Applications

With the increasing evolution of renewable energy technology, end users are seeking ways to both manage and publish solar power status and performance across their user base while minimizing long term operational costs and support services. Given the rapidly evolving PV technology, standards and features, discerning users are standardizing on device-agnostic visualization technology.

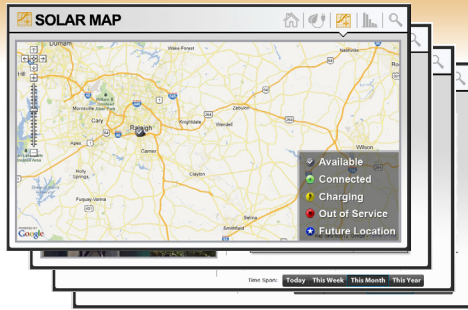
The PV Universal Dashboard from Activelogix allows end users the freedom to choose and grow with the best-of-breed station manufacturers and not be handicapped by a single manufacturer or prior purchase.



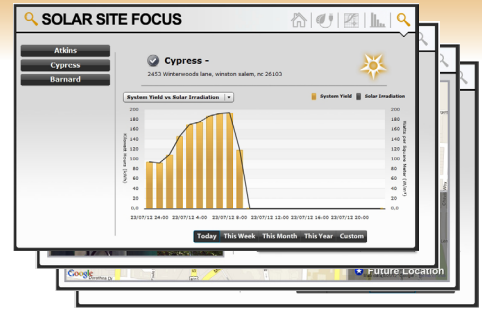
The main page of the PV Dashboard shows high level information aggregated across the entire PV network of stations, including the Current Solar Power Level, Solar Yield Today, Total Grid Power Offset, and Average Solar Irradiance across the area.



Station Ranking for Power Delivery and Utilization Management.



Integrated Google™ Maps and Station Status.



Drill Down to Individual Stations for Detailed Analysis.

Features

The Solar Power Universal Dashboard provides the user with a comprehensive array of features detailing every aspect of their use and status, regardless of manufacturer:

- PV Network Status at a glance - Shows which stations are connected, charging, out of service, or will be online soon
- Site Specific - Customizable moving picture display of client PV sites
- Kiosk Capability - Ability to run in unattended “Kiosk” mode when utilized with Periscope
- Map-Based Navigation - View all stations or just those of specific interest
- Statistical Ranking - Determine which stations are most utilized based on total energy produced.
- Solar Energy Savings - Compares the total solar energy produced to equivalent common units over a user determined span of time
- Industry Proven - Utilizes the Tridium-based Niagara^{AX} Framework for security, interoperability, and reliability

Requirements

The Solar Power Universal Dashboard can access, organize and display a comprehensive set of information from a hybrid array of PV generation stations. The connected stations must support industry communications standards such as Modbus[®], and in select cases, basic serial interfaces can be used to source the data. Contact Activelogix to verify integration options.

The connected stations must be capable of supplying basic register information, including:

- Connection Status (Online, Generating)
- Generated Power (or real-time Output Current and Voltage)
- Solar Irradiance Values



Periscope™ by Activelogix is a configurable, browser-based dashboard application that provides identification of real-time data and historical trends in the rapidly changing environments of multi-facility operations. Periscope reduces volumes of data from disparate systems into visual knowledge, providing the opportunity for users to quickly identify issues, access relationships, and take action in order to optimize resource efficiencies. Visit us at www.periscopedashboard.com.



Activelogix, LLC is a leading provider of internet-based enterprise automation solutions for building intelligence. By utilizing design services, consulting, custom applications and technologies, Activelogix supports the management and optimization of intelligent, sustainable, and secure facilities in a multi-vendor, cross-platform environment. Our software and hardware solutions are distributed through a growing channel of national accounts, systems integrators and original equipment manufacturers. Additional information about Activelogix and all available products and services can be found at www.activelogix.com, or by contacting Activelogix at 1-704-553-8510 or 1-800-670-5977.

www.activelogix.com

Powered by
niagara^{AX}
FRAMEWORK