



For Owners

For energy and sustainability conscious owners and managers, Periscope is an intuitive tool to enable comparisons between campuses, buildings and departments. Using Periscope's Ranking Chart Viewlet, assessments can be made to foster improved energy awareness.

For Operators

For facility managers, Periscope offers real-time and historical graphical viewlets which allow for immediate visual identification of "system health" or other problem areas in the connected Niagara^{AX}® network or 3rd party automation system.

For Integrators

For the systems integrator, Periscope can save time as a flexible Graphical User Interface (GUI) by integrating equipment views, expediting standard charting and KPI analyses and exporting ENERGY STAR metrics.

For Administrators

For the administrator or energy manager, Periscope enables the user to visualize locations that are deviating from their historical performance or operating outside the norm for similar structures. Periscope can also provide timely tracking of savings enhanced as a result of investment in conservation or capital projects.



Periscope™

Building Intelligence for Action

Overview

Periscope™ by Activelogix is a configurable, browser-based dashboard application that provides identification of real-time data and historical trends in the rapidly changing environments of multi-facility operations. Periscope provides the opportunity for users to quickly identify issues, assess relationships, and take action in order to optimize resource efficiencies and sustainability initiatives by reducing volumes of data from disparate systems into visual knowledge.



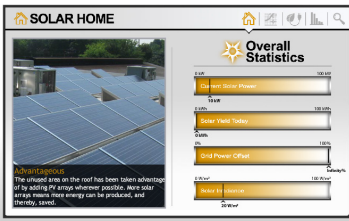
Built by you, for you – The dashboard can include multiple tabs, with each tab containing a unique number of "viewlets". The custom "on the fly" setup allows for unlimited configurations.

To Each Their Own

Periscope is the answer to end user requests for a more dynamically configurable way to view the facility information in their enterprise. Due to the wide range of potential users, from the highly technical to the non-technical, Periscope was designed to provide each user with their own unique dashboard client. The dashboard can easily be set up and modified from a growing library of "viewlets" by any user without affecting any other users' preferences and settings.

ENERGY STAR® Support

Periscope can now integrate directly with EPA's ENERGY STAR Portfolio Manager. The driver can pull utility bill data and metrics from the ENERGY STAR database into AX and can also push meter data directly into properties created in EPA's ENERGY STAR Portfolio Manager. This automated process can save an Energy Manager a significant amount of time. ENERGY STAR data and scores can also be displayed directly in Periscope and locations can be ranked based off of their score.



Advancements – New and exciting viewlets are always in development, many of which originated from user-specific input.

Connectivity

Periscope is designed to run as a module on a Niagara^{AX}® station and utilizes the trusted Niagara licensing and security model. The Periscope service is then accessible to all end users through a standard browser interface, such as Internet Explorer, Mozilla Firefox, and Safari.

Periscope integrates real-time and historical data available from most traditional Building Automation manufacturers via BACNet[®] or the NIAGARA FRAMEWORK[®]. A built-in discovery and mapping wizard extracts only the approved point and trend data and makes the data available to Periscope users.

Periscope can also access data from business systems and traditional databases. These data feeds enable Periscope to combine business and control data for optimal visual knowledge of your facility performance.

www.activelogix.com
www.periscopedashboard.com



Intuitive – A user's setup can be configured, exported, shared, and ready for presenting in minutes, not hours.

Features

- **Viewlet Library** - A growing library of viewlets empowers users with an ever-expanding offering of visualization options for various types of data.
- **Auto Discovery Wizard** - Allows users to efficiently identify and map the information from many sources, including meters, databases, or automation systems into multiple viewlets.
- **Data Normalization** - Provides the ability to normalize data such as energy consumption, and account for differences in square footage, etc.
- **Greentips Slideshow & Kiosk Manager** - Pictorial slideshow of viewlets showcasing energy-saving tips provides users with a highly informative and visually attractive display, perfect for kiosks. The Kiosk Manager is fully configurable with settings for viewlets, tabs, and informational popups. This helps foster "grass-roots" support, while highlighting the energy initiatives of corporate and public sustainability awareness campaigns.

History Grouping & Mathematical Conversion

Periscope provides the ability to easily convert existing data in the system to related variables such as converting last year's kWh to MMBTUs or aggregating kWh from 10 sites and saving the sum as a new trend for use in your dashboard.

Benefits

- **User-Centric** - Each user can create, view and modify their own dashboard "on-the-fly" in minutes, thus enabling them to focus on current or rapidly changing conditions for their area of responsibility.
- **Virtual Naming** - Data mapped into Periscope can be given "friendly" (recognizable) names without impacting the underlying control and meter database.
- **Ownership** - Avoid cloud-based dashboard applications by hosting your dashboard on your server and network, behind your firewall. Say goodbye to hosting fees and concerns over data ownership.
- **Equivalency Conversions** - Allows for "one-click" display of selected trends in equivalent units, such as kWh to dollars or metric tons of CO².
- **Viewlet Export Options** - Viewlets can be exported as an image file, or as an image within a PDF file. Their tabular data can also be exported in CSV format for instant use in reports and technical documents.
- **Competition** - Users can benchmark locations against one another. Engage your tenants, employees, students, etc. to actively participate in lowering their energy usage in a fun and competitive way. Use Periscope to give real-time feedback on the results of the competition period.

About Activelogix

Activelogix LLC is a leading provider of Internet-based enterprise automation solutions for Building Intelligence. By utilizing design services, consulting, custom applications and technologies, Activelogix supports the management and optimization of intelligent, sustainable, and secure facilities in a multi-vendor, cross-platform environment. Our software and hardware solutions are distributed through a growing channel of national accounts, systems integrators and original equipment manufacturers. Additional information about Activelogix and all available products and services can be found at www.activelogix.com, or by contacting Activelogix at 704-553-8510 or 1-800-670-5977.